

North Jersey Cruisers

CATSKILLS FALL FOLIAGE CRUISE

View of Delaware River from the Hawk's Nest Road, Sparrow Bush, N. Y.



62085

OCTOBER 20TH + 21ST, 2012

Saturday, October 20th

For a map of the entire cruise see Map 1 on page 8.

Meetup – Pompton Queen Diner

9:15 - if you want breakfast

10:00 - if you aren't eating

- Meet
- Make sure you are gassed up before meeting
- I recommend you bring a lawn chair in case we decide to build a camp fire Sat. night.
- *GPS –Pompton Queen Diner, 710 State Route 23, Pompton Plains, NJ*

Hitting the Road (See Map 2 on p. 9)

10:30-11:30

- We'll head up 23 North for about 1 hour towards Port Jervis, NY.

Quick Stretch – High Point Monument

11:30–12:00

- We can take a quick stop at High Point Monument since we'll be passing right by it anyways. We'll use it as an opportunity to stretch our legs, take a leak (there are bathrooms) and take a few pics.
- *GPS - 41° 18' 23.04" N 74° 40' 14.78 " W*



High Point Monument

Back on the road – Hawk’s Nest (See Map 3 on p. 10)

12:00-1:30

- We’ll continue up 23 North through Port Jervis NY, and onto Scenic Byway Route 97 North.
- Shortly after passing through Port Jervis, Route 97 will lead us through a scenic section called Hawk’s Nest.
- We won’t all be able to stop at the same lookouts since only a few cars will fit at each. Ryan will organize for us to stop at separate lookouts and meet back up.



Hawks Nest



A lookout along Route 97 in Hawks Nest

Lunch in Barryville

1:30-2:30

- Barryville is a small town along Rt. 97. There's not much to choose from as far as food goes but there is a place right on Rt. 97 called Il Castella that according to Yelp reviews has good Italian food and specialty pizza. We can stop someplace else if you guys see something else you prefer but this might be the only restaurant in town. Fortunately the reviews are good.
- Before getting back on the road, we'll fill up our gas tanks by crossing over the Delaware River onto the PA side where there is an Exxon gas station.
- *GPS – Il Castella, 3438 S 97 Street, Barryville, NY 12719*

Back on the road – Upper Delaware Region (See Map 4 on p. 11)

2:30-4:00

- We'll continue taking Route 97 North along the upper region of the Delaware River until we reach a town called Hancock, NY, where Route 97 ends. (Approximately 1 hour of driving from Barryville).
- From Hancock, we'll take Route 17 West to the town of Deposit, NY (Another 15 minutes past Hancock).

Quick stretch – Deposit, NY

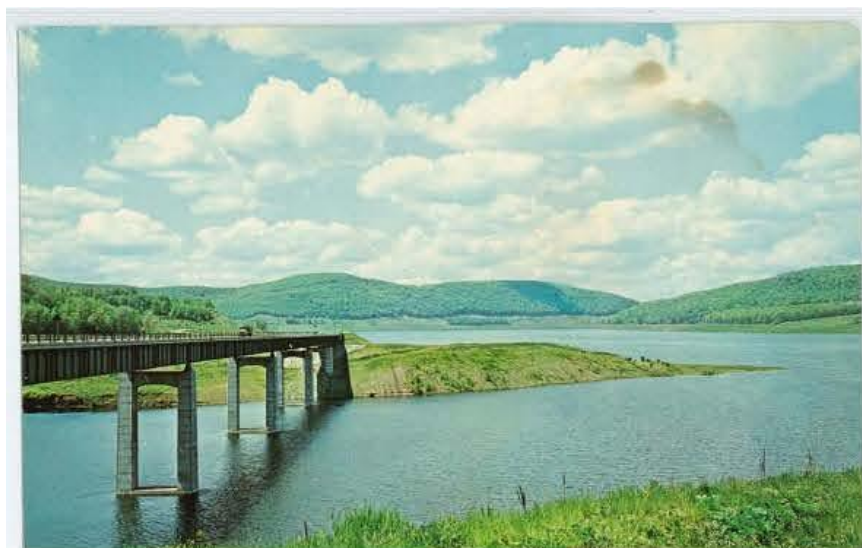
4:00-4:15

- Just quick opportunities to fill up on gas, go to the bathroom, and stretch our legs.

Back on the road – Cannonsville Reservoir (See Map 5 on p. 12)

4:15-5:00

- From Deposit NY, we'll take Route 10 North past Cannonsville Reservoir to Walton PA, where we'll be spending the night.



Old postcard of Rt. 10, Cannonsville Reservoir

Overnight in Walton, PA

- A dinner recommendation was made to me by the owner of the Walton Inn. She suggested a place called the Rainbow Lodge for dinner and drinks. I'm not sure if it will be too cold out, but she also mentioned that they have a pier that goes out onto the lake with panoramic mountains surrounding the lake. Again, we can play it by ear and if you guys see someplace else, we can go wherever.
- We could also look for some firewood since the owner told me there is a fire ring outside the cabin and a store to get some drinks and snacks for the night. I'll bring a boom box in case we want to listen to any music indoors or outdoors back at the cabin.
- *GPS – Walton Inn, 37 Stockton Avenue, Walton, NY, telephone: 607-865-4724*



Walton, NY

Sunday, October 21st

Breakfast and Back on the road – Pepacton Reservoir (See Map 6 on p. 13)

10:30-1:30

- After checking out of the Inn (check out time is 11 am but we can check out sooner) we can grab breakfast at the one diner in the town of Walton called TA's, the McDonald's in town, or we can stop at one of the close by towns on the road.
- We'll take Route 206 E/30 N which drives along Pepactin Reservoir. Shortly after 30 merges into 28 we'll stop at the Mobil station on Rt. 28 right before turning south onto County Road 47 which cuts through the Catskill Mountains down to Route 55 which we will take east to Napanoch where we will stop for lunch and gas.



Pepacton Reservoir in the Fall



Lunch in Napanoch, NY

1:30-2:30

- I get 3 restaurants in this town when Googling, the best seems to be a place called the White Wolf Lodge which serves American style pub food and got pretty good reviews. The other two places are a small family diner and a Chinese restaurant. We'll also gas up before leaving town.

Back on the road – Shawangunk Mountains National Scenic Byway (See Map 7 on p. 14)

2:30-4:00

- From Napanoch, the next 25 miles going east on 209/44/55/208 are part of a National Scenic Byway called the Shawangunk Mountains National Scenic Byway. There is supposedly a great scenic overlook along this route and this sounds like it might be the most scenic part of the cruise.
- This stretch ends near a town called Walkill which is a few miles from the NY Thruway.



Route 44/55 – Shawangunk Scenic Byway



NY State Thruway back home

4:00

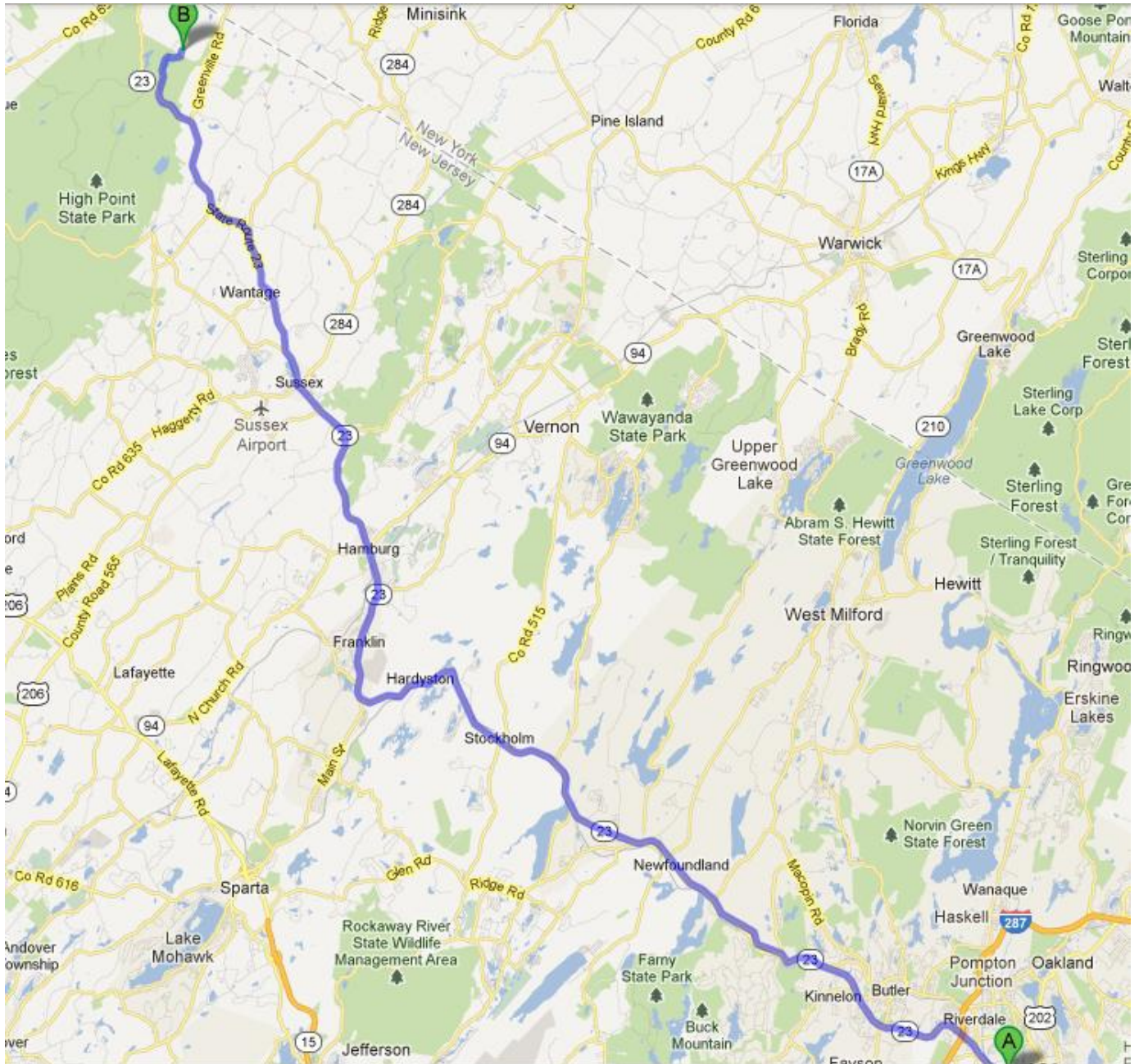
- From this point out it's the NY Thruway all the way back home (about a 30-45 minute drive depending on what part of Bergen County you are from).
- People can decide if they feel like heading home or make plans to stop somewhere for dinner.

PHONE NUMBERS

<i>John</i>	-	██████████
<i>Tyne</i>	-	██████████
<i>Rich</i>	-	██████████
<i>Karen</i>	-	---
<i>Rohit</i>	-	██████████
<i>Ryan E</i>	-	██████████
<i>Glenys</i>	-	---
<i>Steve</i>	-	██████████
<i>Ryan T</i>	-	██████████
<i>Erik</i>	-	
<i>Trey</i>	-	
<i>David</i>	-	██████████
<i>Adrienne</i>	-	---
<i>Andrew</i>	-	██████████
<i>Lindsay</i>	-	██████████

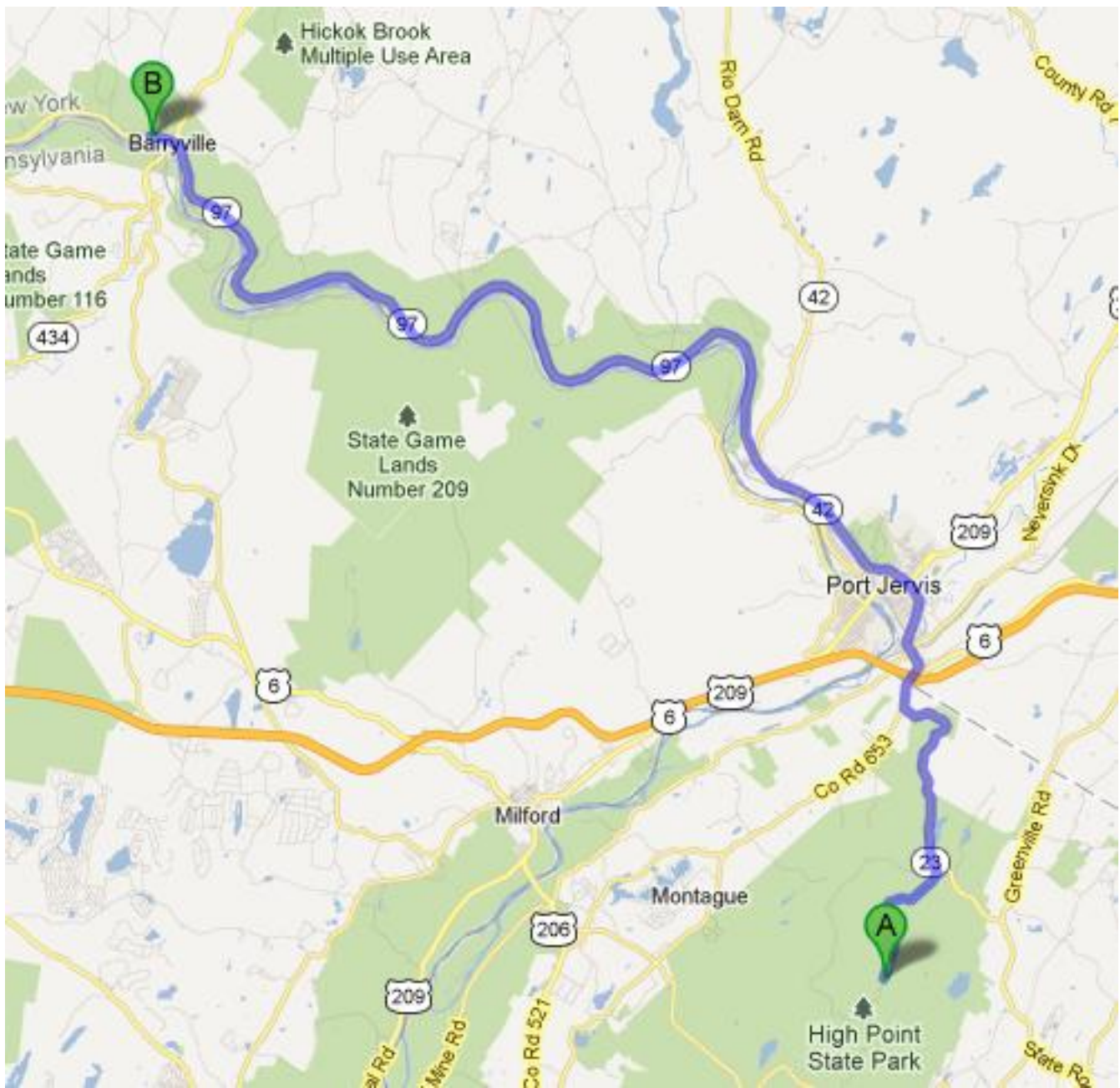
Map 2 – Pompton Queen Diner to High Point Monument

Take 23 North. Make Right into entrance of High Point State Park and meet at the big parking lot at the top of the mountain next to the monument.



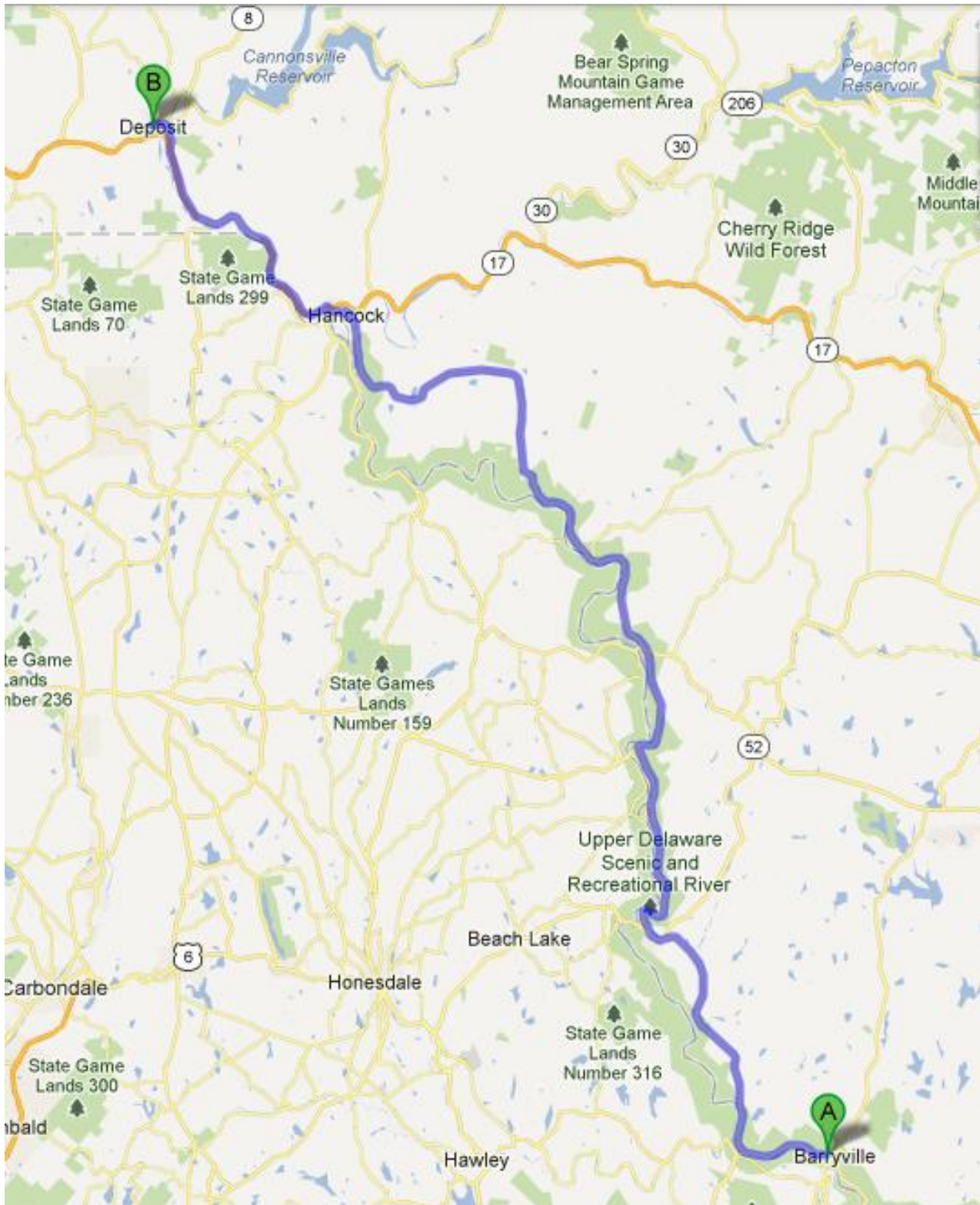
Map 3 – High Point Monument to Barryville

Follow Route 23 North through Port Jervis and Take Route 97 North



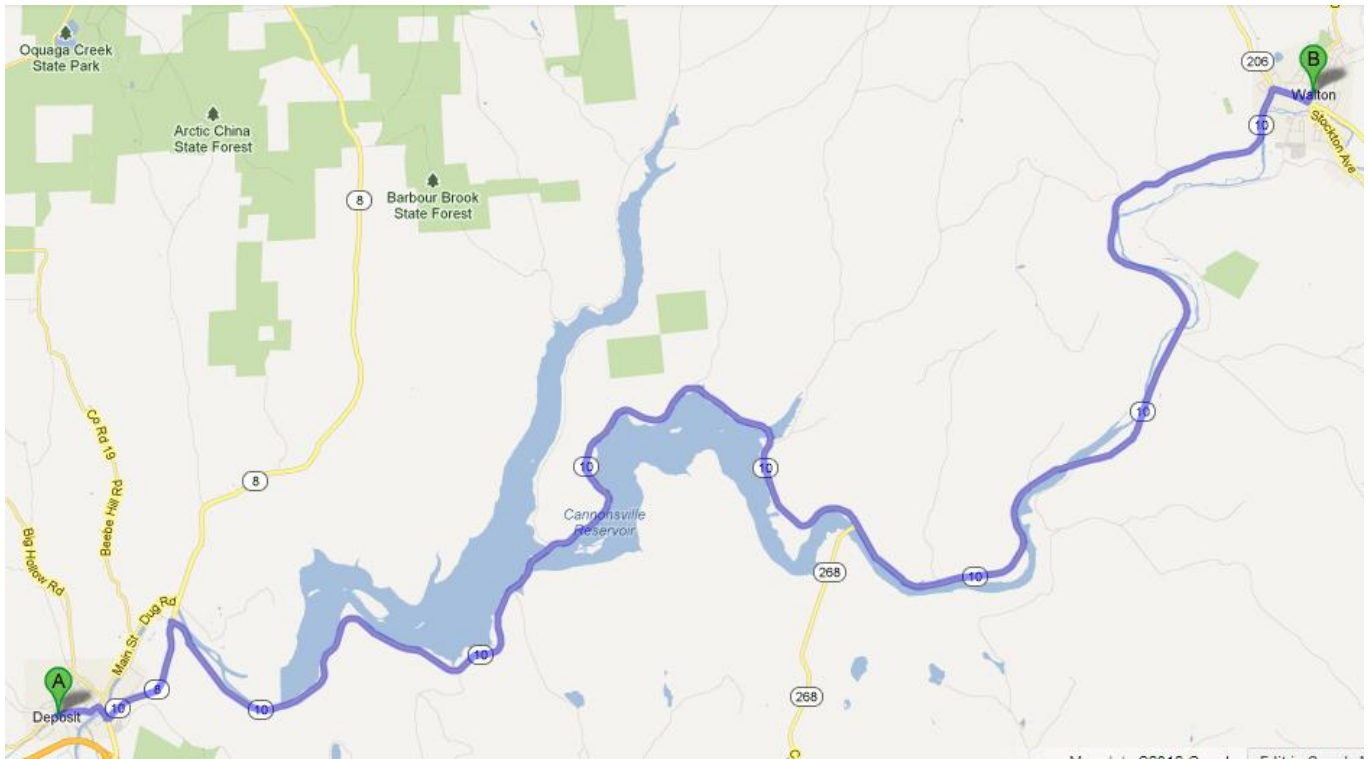
Map 4 – Barryville to Deposit

Follow Route 97 North to Hancock where 97 ends. Take Route 17 West to Deposit.



Map 6 – Deposit to Walton

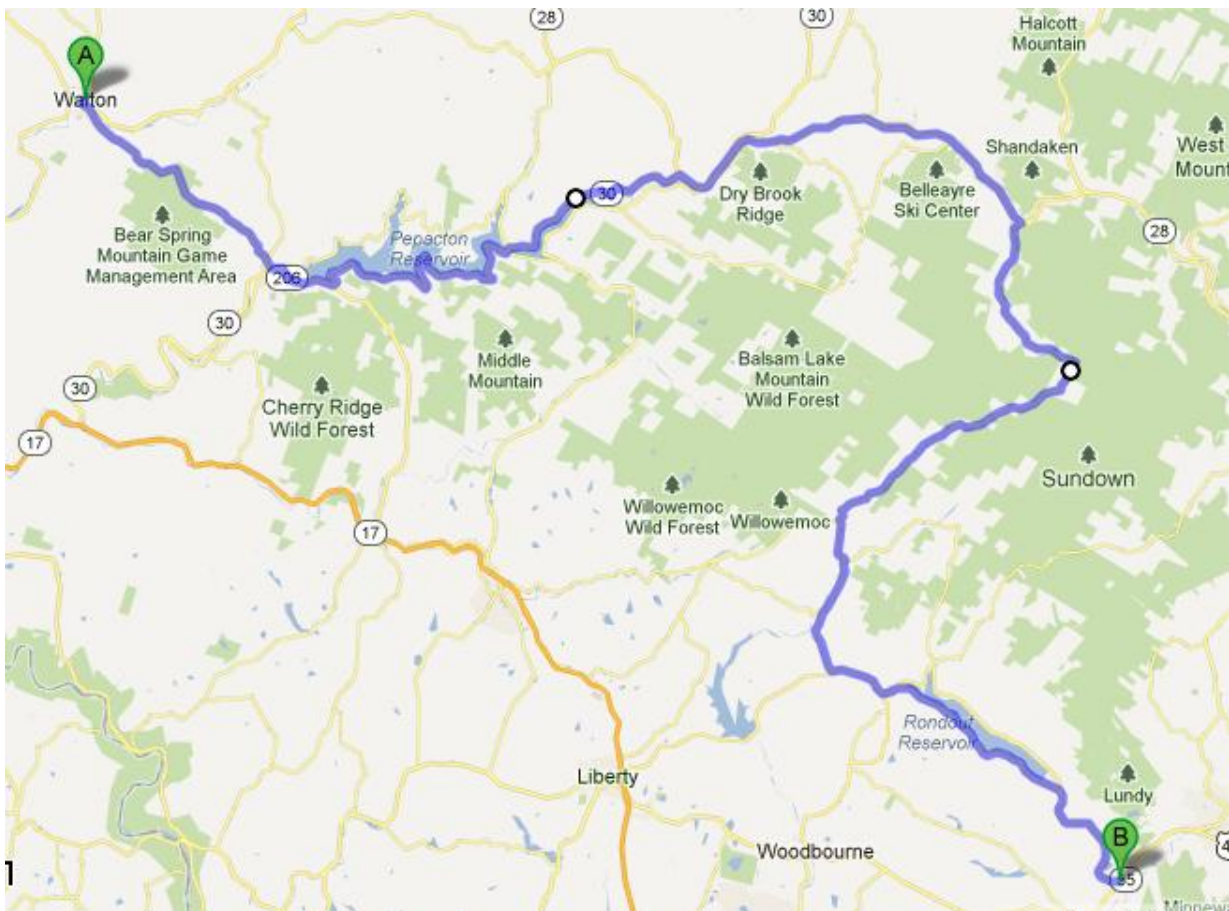
From Deposit, take Route 10 North along Cannonsville Reservoir to Walton.



Map 7 – From Walton, past Pepacton Reservoir, to Napanoch

I'm giving the Google maps directions for this section cause it's a little tricky. Basically we are taking Rt 206 E to Rt 30 N then making a right onto a section called both Rt 28 S and Rt 30 N (yup, one direction is simultaneously called North and South). Then a right onto County Rd 47 which will be called Oliverea Slide Mountain Rd and Frost Valley Rd at points. Then make a right onto County Rd 19 and then a left onto Rt 55 into Napanoch.

- A** Stockton Ave
1. Head southeast on NY-206 E/Stockton Ave toward Garden St
Continue to follow NY-206 E 12.7 mi
 2. Continue onto NY-30 N 19.9 mi
 3. Turn right onto NY-28 S/NY-30 N/State Route 28
Continue to follow NY-28 S/State Route 28 15.8 mi
 4. Sharp right onto Co Rd 47/
Oliverea-Slide Mountain Rd
Continue to follow Co Rd 47 19.7 mi
 5. Continue onto Frost Valley Rd 0.9 mi
 6. Turn right onto Claryville Rd/Co Rd 19 4.6 mi
 7. Turn left onto NY-55 E 15.8 mi
 8. Turn left onto Plank Rd 0.2 mi
 9. Take the 1st left onto Hart St 95 ft
- B** Napanoch, NY



Map 7 – Napanoch to the NY Thruway

From take 209 N to 44 E/55 E/Main Street. Make a right onto 208 S and left onto 300 S and take 300 S to the NY Thruway S. Once you are on the NY Thruway S take it for about 45 minutes until you are back in NJ.

